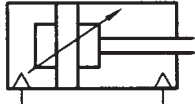


**Pneumatic cylinders, piston-Ø 160, 200, 250 and 320 mm
Double acting with adjustable cushions
according to DIN ISO 6431/VDMA 24562**

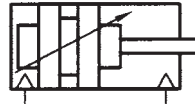


Technical data for series

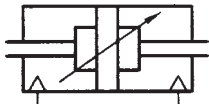
XG



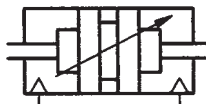
XG-Ø-stroke-100
XG-Ø-stroke-150



XG-Ø-stroke-000
XG-Ø-stroke-050



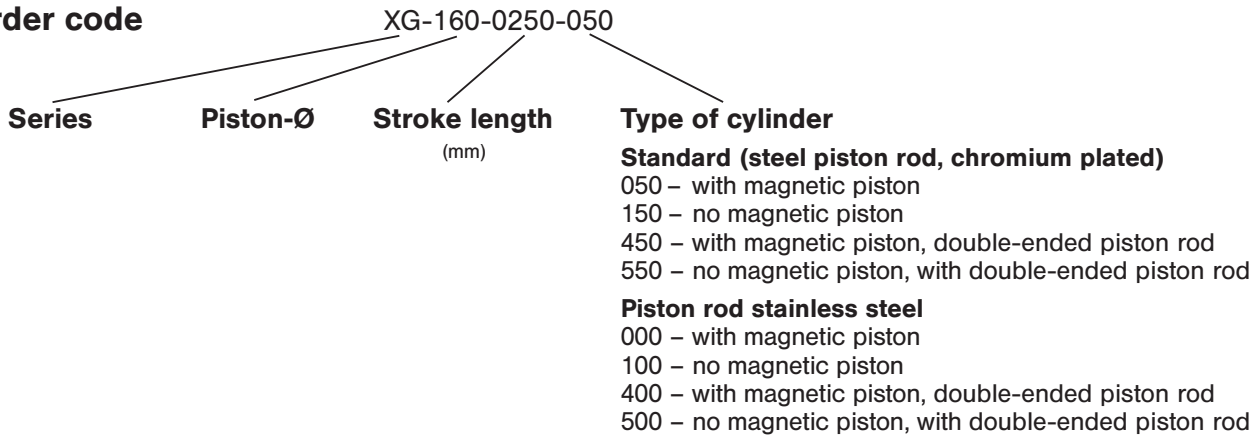
XG-Ø-stroke-500
XG-Ø-stroke-550



XG-Ø-stroke-400
XG-Ø-stroke-450



Order code



Design and function

Double acting cylinder with adjustable cushions.
Standard stroke lengths in table below, additional lengths on request.

Order number <small>Please complete according to order code.</small>	XG-160-...	XG-200-...	XG-250-...	XG-320-...
Piston-Ø (mm)	160	200	250	320
Force at 6 bar in N**				
Extension	10860 (2441.4 lbf.)	16960 (3812.8 lbf.)	26500 (5957.4 lbf.)	43450 (9767.9 lbf.)
Retraction	10180 (2288.5 lbf.)	16280 (3659.9 lbf.)	25450 (5721.4 lbf.)	41750 (9385.8 lbf.)
Cushioning length (mm)	50		60	65
Connection	G 3/4		G 1	
Piston rod thread	M 36 x 2		M 42 x 2	M 48 x 2
Operating pressure	1 ... 10 bar (14.5 ... 145 psi)			
Temperature range	- 20 °C ... + 80 °C (- 4 °F ... + 176 °F)			
Medium	filtered/lubricated or filtered/non-lubricated air. If speeds exceed 1 m/s (3.3 ft/s) lubricated air is recommended.			
Standard stroke lengths (mm)*	25, 50, 80, 100, 125, 160, 200, 250, 320, 350, 400, 500, 600, 700, 800, 900, 1000, max. 2500			
Materials	Cylinder tube: Al (anodized) End caps: Al-die-cast (painted) Piston rod: chromium-plated (standard) – stainless steel (see order code) Seals: PU/NBR			

* Refer to "Critical Load Diagram" on page 8.240 to determine critical values on the piston rod.

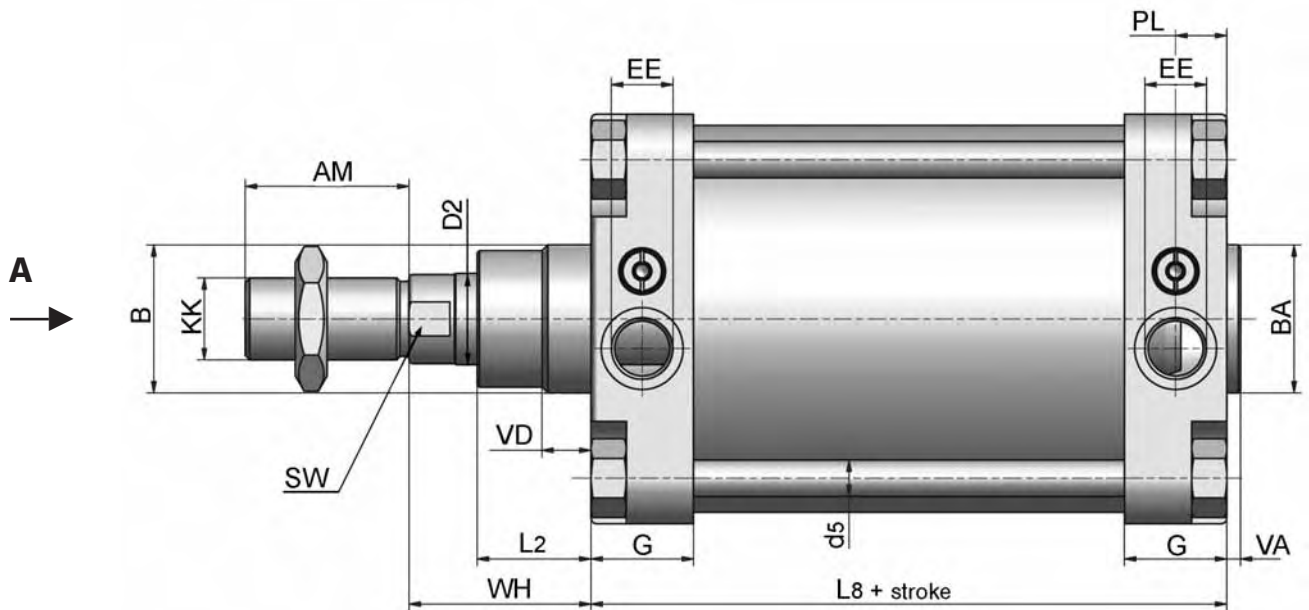
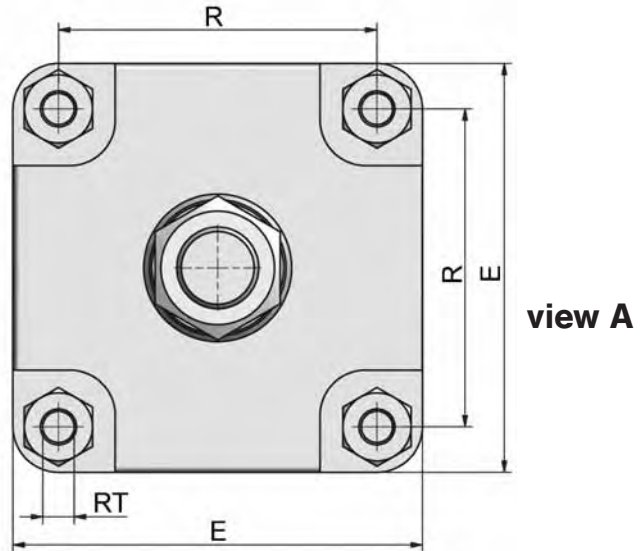
** The internal friction is considered.

Pneumatic cylinders, piston-Ø 160, 200, 250 and 320 mm
 Double acting with adjustable cushions
 according to DIN ISO 6431/VDMA 24562



Dimensions for series

XG



Piston-Ø	AM	Ø B	BA	Ø D2	d5	E	EE	G	KK	L2	L8	PL	R	RT	SW	VA	VD	WH
160	72	65	65	40	16	180	G 3/4	45	M36 x 2	50	179.5	22.5	140	M16	36	6	21.5	80
200	72	75	75	40	16	220	G 3/4	45	M36 x 2	55	180	22.5	175	M16	36	6	26.5	95
250	84	90	90	50	20	268	G 1	54	M42 x 2	67	200	31	220	M20	46	10	20	105
320	96	110	110	63	24	340	G 1	57	M48 x 2	82	220	31	270	M24	55	10	20	120

Piston-Ø	160	200	250	320
Weight at 0 mm stroke in kg	15.0 (33.06 lbs.)	20.0 (44.09 lbs.)	28.5 (62.83 lbs.)	48.4 (106.70 lbs.)
Weight per 100 mm stroke	2.0 (4.41 lbs.)	2.5 (5.51 lbs.)	3.8 (8.38 lbs.)	6.2 (13.67 lbs.)